

EVG

Expert and Vendor Guide

ACBA

2023

FALL



A valuable resource for the legal community, this guide includes listings of businesses, vendors and expert witnesses organized by categories of interest to Pittsburgh-area attorneys.

EVG listings are paid advertisements; partners are vetted by the ACBA.

PRESENTED BY


SHOREBRIDGE
WEALTH MANAGEMENT

ACBA.ORG/EVG

EVG

Expert and Vendor Guide

You can't practice law alone.

In order to serve the needs of their clients, attorneys partner with an array of vendors, expert witnesses, consultants and other businesses. Through our Expert and Vendor Guide, the Allegheny County Bar Association aims to help attorneys find the right experts, business partners and vendors to help their practices excel.

This publication lists the contact information for dozens of vetted partners – organized by business category – that the attorneys of the Pittsburgh Legal Community partner with. This publication is distributed to ACBA members via email four times per year, is available 24/7 at [ACBA.org/EVG](https://www.ACBA.org/EVG) and was published in hard copy form in the March 24, 2023 edition of *Lawyers Journal* newspaper.

Vendors interested in being listed in future editions of the Expert and Vendor Guide should contact Brian Knavish, the ACBA's Director of Marketing, Media Relations and Strategic Partnerships, at bknavish@acba.org or 412-402-6620.

© Allegheny County Bar Association 2023
400 Koppers Building
436 Seventh Avenue
Pittsburgh, PA 15219

412-261-6161
www.ACBA.org

The Allegheny County Bar Association works to seek advertising from businesses of interest to members and/or obtain discounts on a variety of products and services for ACBA members. Members should fully evaluate each product or service to determine its suitability for the member's particular purpose. In some instances, the ACBA may receive royalties on products and services purchased by members; however, the ACBA makes no representations, warranties, endorsements or recommendations containing any of the products or services listed, unless explicitly as identified as such.



INVEST
WITH
CONFIDENCE

WE ARE HERE TO HELP
TAILORED WEALTH
MANAGEMENT
FOR YOUR
UNIQUE NEEDS



412.742.4850 | shorebridgewm.com
600 Waterfront Drive, Suite 125
Pittsburgh, PA 15222-4751

Securities offered through Raymond James Financial Services Inc., member FINRA/SIPC. Investment advisory services are offered through Raymond James Financial Services Advisors, Inc. Shorebridge Wealth Management is not a registered broker/dealer and is independent of Raymond James Financial Services. Investing involves risk and investors may incur a profit or loss.

Year-end Planning Considerations

By Shorebridge Wealth Management

The weather is getting colder, the days are getting shorter, and soon the holidays will be upon us! With schedules about to be packed full of events, it is time to review and tend to important year-end planning items. Here are some on our checklist as we sit down with clients before year end:

Required Minimum Distributions (RMD): Remember the many years of tax-deferred interest within Traditional IRAs, 401(k) plans and other pre-tax retirement accounts? It is now time to pay the piper. Secure Act 2.0 offered some relief, increasing the starting age for RMDs to 73. For individuals who do need to make RMDs, make sure to take your distributions prior to December 31st to avoid a penalty of 25% on amounts not withdrawn.

Tax-Loss Harvesting: If you are holding investment positions with unrealized losses, evaluate the merit of selling those positions to offset any gains incurred during the year. In the absence of realized capital gains to offset, up to \$3,000 of capital losses can be deducted each year from income and amounts above this threshold can be carried forward to future tax years. As a word of caution, be aware of triggering a “wash sale,” which would disallow the loss for tax purposes.

Annual Gifting: Individuals can gift up to \$17,000 per calendar year per person before eating into their lifetime gift tax exemption. This annual exclusion is an important wealth transfer tool for high-net-worth individuals. Be sure to discuss with a wealth advisor to ensure you can afford to give away your hard-earned money.

College Savings: Gifts made into 529 plans for the 2023 tax year must be made by December 31st to count towards your annual exclusion amount (\$17,000 per beneficiary). You may also elect to combine up to five years of annual exclusion amounts in a single year's contribution, to a max of \$85,000 for each beneficiary per taxpayer. On a separate note, reimbursement from 529 plans for qualified education expenses incurred during the calendar year should also occur by December 31st.

Roth Conversions: Individuals of any income level can convert amounts from Traditional IRA to Roth IRA. Amounts converted are taxable in the year of the conversion. Low income tax years, or moments when investment values are depressed, represent opportune times to pay some or all of the embedded tax liability within a Traditional IRA. Doing so protects future capital appreciation from taxation while providing the additional benefits of Roth accounts. If possible, we suggest not withholding taxes during the conversion process, and instead paying those taxes from other sources. Doing so maximizes the dollars that remain in the tax advantaged Roth account.

Charitable Gifting: Giving back to society while also saving money on taxes is a win-win in our opinion. Those looking to contribute significant value to charity should consider tools such as donor advised funds or private foundations. Those looking to make annual gifts may consider gifting highly appreciated securities, which have been held for longer than a year, as an alternative to cash. Doing so potentially reduces capital gain tax exposure while also providing an income tax deduction. Individuals over age 70 ½ may consider qualified charitable distributions “QCDs.” Up to \$100,000 of IRA distributions can be directed to a 501(c)(3) nonprofit, which also counts towards satisfying RMD requirements.

Each above strategy requires careful analysis and consultation with tax and legal professionals because of the nuances involved. There is a lot to be thankful for this time of year, and we are thankful for the many professional advisors who help our team and our clients throughout the year. As always, our team at Shorebridge is here to help, and we look forward to talking with many of you as another great year nears its end. ■

RMD's are generally subject to federal income tax and may be subject to state taxes. Consult your tax advisor to assess your situation. Favorable state tax treatment for investing in Section 529 college savings plans may be limited to investments made in plans offered by your home state. Investors should consult a tax advisor about any state tax consequences of an investment in a 529 plan. While we are familiar with the tax provisions of the issues presented herein, as Financial Advisors of Raymond James, we are not qualified to render advice on tax or legal matters. You should discuss tax or legal matters with the appropriate professional. Securities offered through Raymond James Financial Services, Inc., member FINRA/SIPC. Investment advisory services are offered through Raymond James Financial Services Advisors, Inc. Shorebridge Wealth Management is not a registered broker/dealer and is independent of Raymond James Financial Services. Any opinions are those of Shorebridge Wealth Management and not necessarily those of Raymond James. Prior to making an investment decision, please consult with your financial advisor about your individual situation. Shorebridge Wealth Management was a sponsor of the Allegheny County Bar Association. Allegheny County Bar Association is not affiliated with and does not endorse the people, products or services of Shorebridge Wealth Management or Raymond James.



Winfield S. Smathers, IV, AIF®

FOUNDER AND CEO, SHOREBRIDGE WEALTH MANAGEMENT (SWM)
FINANCIAL ADVISOR AND BRANCH MANAGER, RAYMOND JAMES
FINANCIAL SERVICES, INC. (RJFS)
PHONE: 412-742-4856
EMAIL: SMATHERS@SHOREBRIDGEWM.COM



Reed Natali, CFA, CFP®, CAP®

MANAGING DIRECTOR, SWM
FINANCIAL ADVISOR, RJFS
PHONE: 412-742-4862
EMAIL: NATALI@SHOREBRIDGEWM.COM



Sunny Erdman, CEPA

MANAGING DIRECTOR, SWM
FINANCIAL ADVISOR, RJFS
PHONE: 412-742-4865
EMAIL: ERDMAN@SHOREBRIDGEWM.COM



Kyle D. Balliet, CFP®

MANAGING DIRECTOR, SWM
FINANCIAL ADVISOR, RJFS
PHONE: 412-742-4859
EMAIL: BALLIET@SHOREBRIDGEWM.COM



Joseph M. Maker, CPA, CFP®

MANAGING DIRECTOR, SWM
PHONE: 412-742-4854
EMAIL: MAKER@SHOREBRIDGEWM.COM



Joe Lantz, CFA, CAIA

MANAGING DIRECTOR, SWM
FINANCIAL ADVISOR, RJFS
PHONE: 412-742-4846
EMAIL: LANTZ@SHOREBRIDGEWM.COM



Erik Olson, CFA

FINANCIAL ADVISOR, RJFS
PHONE: 412-742-4847
EMAIL: OLSON@SHOREBRIDGEWM.COM



Mark Summers, AAMS[®]

FINANCIAL ADVISOR, RJFS
PHONE: 412-742-4850
EMAIL: SUMMERS@SHOREBRIDGEWM.COM



Ashby Daniels, CFP[®]

FINANCIAL ADVISOR, RJFS
PHONE: 412-742-4861
EMAIL: DANIELS@SHOREBRIDGEWM.COM

ABSTRACTING

Chicago Title Insurance Company

Tom Baughman
Thomas.Baughman@ctt.com
412-537-0678
www.pittsburghncs.ctic.com

ACCIDENT RECONSTRUCTION

AccuWeather Forensics

John D. Lavin, CCM
John.Lavin@accuweather.com
814-235-8626
<https://afb.accuweather.com/forensic-services>

Rimkus

Jennie Weakland
jweakland@rimkus.com
330-618-6041
www.Rimkus.com

ACCOUNTING, BOOKKEEPING AND CPAs

Grossman Yanak & Ford LLP

Mary Lou Harrison
harrison@gyf.com
412-338-9308 x 247
<https://gyf.com>

RSM US

Nick Dehainaut
Nick.Dehainaut@rsmus.com
412-999-7302
www.rsmus.com

SurePoint Technologies

Lydia Flocchini
lflocchini@surepoint.com
www.surepoint.com

AI

CounselStack

Von Wooding
ai@counselstack.com
724-769-0772
www.CounselStack.com

ALCOHOL MONITORING

Soberlink

Chris Beck
cbeck@soberlink.com
714-330-6905
<http://surl.li/kqeqs>

APPLE IT SERVICES

FSA Consulting

Evan H. Stein
support@fsaconsulting.us
412-228-3100
<https://fsaconsulting.us>

Plummer Slade, Inc.

Alicia Slade
slade@plummerslade.com
412-261-5600
www.plummerslade.com

APPRAISERS – JEWELRY

Henne Jewelers

John Henne
john@hennejewelers.com
412-682-0226
www.hennejewelers.com

APPRAISERS – REAL ESTATE

Owen Appraisal Service LLC

Joanna Owen
joanna@owenappraisal.com
412-999-6673
www.OwenAppraisal.com

AUDIO/VIDEO CONFERENCING

AKF Technologies

depo@akf.com
412-261-2323
www.AKF.com
Network Deposition Services
Mark Vitelli
mvitelli@ndsreporting.com
412-281-7908
www.ndsreporting.com

AWARDS AND TROPHIES

Pittsburgh Trophy Co., Inc.

Keith Nellis
Award@pittsburghtrophy.com
412-261-4376
www.PittsburghTrophy.com

BANKING SERVICES

AmeriServ Trust and Financial Services Co.

Scott Porterfield
sporterfield@ameriserv.com
724-493-6847
www.AmeriServ.com

Dollar Bank

Melissa Krawczynski
MKrawczynski807@dollarbank.com
412-261-8288
www.Dollar.Bank

Dollar Bank

Jered Pander
JPander861@dollarbank.com
412-261-7417
www.Dollar.Bank

Key Private Bank

Kim Cantalamessa
Kim_Cantalamessa@keybank.com
412-807-2755
www.KeyBank.com

Your leading resource for:

Litigation Support

IME Scheduling and Coordination

Legal Nurse Consulting

Life Care Planning

Medical Cost Projections

Disability & Fit for Duty

Evaluations....

and more!



Call or email today!

412-545-3777 | experts@elkimenetwork.com

www.elkimenetwork.com

BANKRUPTCY/INSOLVENCY CONSULTANTS

Compass Advisory Partners

Nick Arrington
nick@compassadvisorypartners.com
412-654-6543 (call/text)
www.CompassAdvisoryPartners.com

BENEFITS

EZ Scripts Pharmacy

Stacy Krauth
stacyk@ezrxmeds.com
412-930-4572
www.EZRxMeds.com

USI Affinity

Mark LeFever
mark.lefever@usi.com
610-537-1435
www.ACBA.org/Insurance

Walstra Expert Witness Company, LLC

Jeroen Walstra, MA, CEA, ABVE-D
jeroenwalstra328@gmail.com
412-526-1038
www.WalstraExpertWitness.com

BILLING SOFTWARE

Plummer Slade, Inc.

Alicia Slade
slade@plummerslade.com
412-261-5600
www.plummerslade.com

SimpleLaw

Dorothy Radke
Dorothy@SimpleLaw.com
312-560-5123
www.SimpleLaw.com

SurePoint Technologies

Lydia Flocchini
lflocchini@surepoint.com
www.surepoint.com

BUSINESS AND CLIENT DEVELOPMENT

ACBA Attorney-to-Attorney Marketing

Jennifer Pulice
jpulice@acba.org
412-402-6623
www.ACBA.org/partnerships

ACBA Lawyer Referral Service

Whitney Hughes
whughes@acba.org
412-261-5555
www.GetAPittsburghLawyer.com

ACBA Website Design Program

James Piaggio
jpiaggio@acba.org
412-402-6653
jpiaggio@acba.org

SimpleLaw

Dorothy Radke
Dorothy@SimpleLaw.com
312-560-5123
www.SimpleLaw.com

T2 Management Solutions

Tamara Philabaum
tsp@t2management.com
814-572-2294
www.t2management.com

Thomson Reuters – FindLaw

Mark Melago
mark.melago@thomsonreuters.com
412-601-0734
www.LawyerMarketing.com

Thomson Reuters – FindLaw

Justin Niedzwecki
justin.niedzwecki@thomsonreuters.com
412-980-0915
www.LawyerMarketing.com

BUSINESS SERVICES AND OUTSOURCING

FSA Consulting

Evan H. Stein
support@fsaconsulting.us
412-228-3100
https://fsaconsulting.us

BUSINESS STRATEGY AND COACHING

C4CS®

Oliver S. Schmidt
schmidt@c4cs.com
412-708-0940
www.c4cs.com

T2 Management Solutions

Tamara Philabaum
tsp@t2management.com
814-572-2294
www.t2management.com

BUSINESS VALUATION

Gleason Experts

Mark W. Medwig
mmedwig@gleasonexperts.com
412-427-1422
www.gleasonexperts.com

Gleason Experts

Jerome (Jeb) B. Schmitt
jschmitt@gleasonexperts.com
412-391-5408
www.gleasonexperts.com

Grossman Yanak & Ford LLP

Mary Lou Harrison
harrison@gyf.com
412-338-9308 x 247
https://gyf.com



OnYourBehalf

by Ursuline Support Services



OnYourBehalf offers a continuum of support services in order to advocate, guide and protect you as you navigate life's transitions.

Our Services

- ***Power of Attorney and Guardianship***
- ***Financial Support Services***
- ***Family Guardian Support***

For more information on any of our services, please contact us at:

OnYourBehalf

by Ursuline Support Services

2717 Murray Avenue | Pittsburgh, PA 15217
412-224-4700

www.UrsulineOnYourBehalf.org



HBK Valuation, Litigation & Forensics

Angelica L. Revelant, Esq., CVA
ARevelant@hbkvg.com
412-431-4460 x 3126
www.HBKvg.com

MDD Forensic Accountants

David Elmore
delmore@mdd.com
703-796-2200
www.mdd.com

CAREER COUNSELING**ACBA Job Board**

Jennifer Pulice
jpulice@acba.org
412-402-6623
jobs.acba.org

ACBA Legal Employment Services

Jennifer Pulice
jpulice@acba.org
412-402-6623
www.PittsburghLegalJobs.com

LHH Recruitment Solutions

Mary Welsh
Mary.Welsh@lhh.com
412-758-7511
www.lhh.com

McClelland Legal Search

Dianne McClelland, Esq.
dianne@mcclellandlegalsearch.com
412-281-6609
www.mcclellandlegalsearch.com

**CATASTROPHIC CASE
MANAGEMENT****E.L.K. Independent Medical Expert
Network**

Kerry Smith
experts@elkimenetwork.com
412-545-3777
www.elkimenetwork.com

CATERERS**Eadie's Market and Catering**

Maggie Joyce
Eadiescatering@gmail.com
412-391-3993
www.eadiescatering.com

First Class Caterers, Inc.

Kyle Szulborski
orders@firstclasscaterers.com
412-494-0555
www.FirstClassCaterers.com

The Joinery

Dan Wagner
dan.wagner@sagehospitalitygroup.com
412-339-1885
www.JoineryHotel.com

COMPUTERS – HARDWARE**FSA Consulting**

Evan H. Stein
support@fsaconsulting.us
412-228-3100
https://fsaconsulting.us

Plummer Slade, Inc.

Alicia Slade
slade@plummerslade.com
412-261-5600
www.plummerslade.com

COMPUTERS – SOFTWARE**FSA Consulting**

Evan H. Stein
support@fsaconsulting.us
412-228-3100
https://fsaconsulting.us

Plummer Slade, Inc.

Alicia Slade
slade@plummerslade.com
412-261-5600
www.plummerslade.com

SimpleLaw

Dorothy Radke
Dorothy@SimpleLaw.com
312-560-5123
www.SimpleLaw.com

CONFERENCE SPACE**AKF Technologies**

depo@akf.com
412-261-2323
www.AKF.com

**CONSTRUCTION EXPERT
WITNESSES****AccuWeather Forensics**

John D. Lavin, CCM
John.Lavin@accuweather.com
814-235-8626
https://afb.accuweather.com/forensic-
services

Civil & Environmental Consultants, Inc.

Thomas Walsh, P.G.
twalsh@cecinc.com
412-429-2324
www.cecinc.com

LitCon Group

Stephen Dowd
sdowd@litcongroup.com
412-613-4719
www.LitConGroup.com

LitCon Group

Rich DuCarme
rducarme@litcongroup.com
412-338-6705
www.LitConGroup.com

MDD Forensic Accountants

Jeffrey Belack
jbelack@mdd.com
412-220-7167
www.mdd.com



ALLEGHENY COUNTY
BAR ASSOCIATION
Serving the Pittsburgh Legal Community



USI Affinity

Protect your practice with precision.

We specialize in insurance *like you specialize in a specific area of practice*. As the endorsed insurance program of the ACBA, we offer a complete range of insurance solutions covering all of your business and personal needs, while providing exclusive insurance and benefit solutions not available to the general public.

Business Insurance:

- Lawyers Professional Liability
- Cyber Liability
- EPLI

1-800-327-1550

Personal Insurance:

- Life & Disability
- Student Loan Refinancing
- Long Term Care
- Auto, Travel, Pet
- Dental & Vision

1-855-874-0816

Call today for more information on the insurance products available to Allegheny County Bar Association members, including exclusive coverages and credits.



AFFINITY

www.acbainsurance.usi.com



WE MAKE IT HAPPEN

FOR OUR CLIENTS ANYWHERE,
REGARDLESS OF TIME, LOCATION OR NEED.

IT'S WHO WE ARE

Let us Make it **Happen** for you!

Court Reporting Remote Depositions Trial Services Videography
Videoconferencing Interpretation Mediations Arbitrations Online Exhibits



888-433-3767

PITTSBURGH VIDEOCONFERENCE CENTER
310 GRANT STREET, SUITE 3212
PITTSBURGH, PA 15219

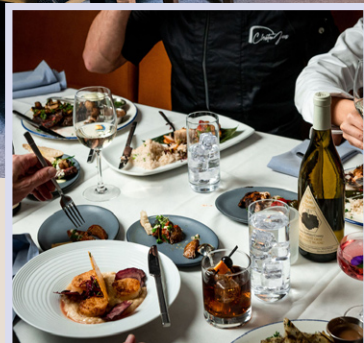
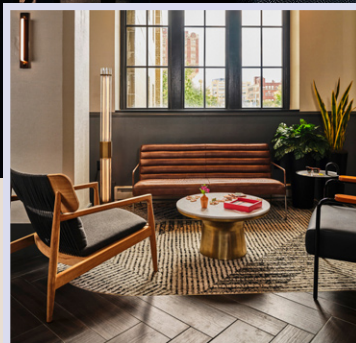
SCHEDULING@PLANETDEPOS.COM

CINDY MIKLOS
ACCOUNT EXECUTIVE
412.334.5465
888.433.3767
CINDY.MIKLOS@PLANETDEPOS.COM



CHARLIE GEORGI
ACCOUNT EXECUTIVE
724.366.0428
888.433.3767
CHARLIE.GEORGI@PLANETDEPOS.COM

WWW.JOINERYHOTEL.COM



JOINERY
HOTEL  PITTSBURGH
CURIO COLLECTION
by Hilton™

Newly renovated meeting space

**Rooftop receptions offering unobstructed
views of downtown Pittsburgh**

**Destination worthy dining at
Christian James restaurant**

Joinery Hotel Pittsburgh | 453 Boulevard of the Allies | sales@joineryhotel.com | 412-339-1879

MDD Forensic Accountants

Marguerite Hart
mhart@mdd.com
412-220-7167
www.mdd.com

Rimkus

Jennie Weakland
jweakland@rimkus.com
330-618-6041
www.Rimkus.com

CONSTRUCTION LITIGATION CLAIMS

AccuWeather Forensics

John D. Lavin, CCM
John.Lavin@accuweather.com
814-235-8626
<https://afb.accuweather.com/forensic-services>

LitCon Group

Stephen Dowd
sdowd@litcongroup.com
412-613-4719
www.LitConGroup.com

LitCon Group

Seth Murray
smurray@litcongroup.com
724-831-2437
www.LitConGroup.com

Rimkus

Jennie Weakland
jweakland@rimkus.com
330-618-6041
www.Rimkus.com

COURT REPORTING

AKF Technologies

depo@akf.com
412-261-2323
www.AKF.com

Network Deposition Services

Mark Vitelli
mvitelli@ndsreporting.com
412-281-7908
www.ndsreporting.com

Planet Depos

Charlie Georgi
charlie.georgi@planetdepos.com
724-366-0428
www.planetdepos.com

Planet Depos

Cindy Miklos
cindy.miklos@planetdepos.com
412-334-5465
www.planetdepos.com

CREDIT CARD PROCESSING

LawPay

Hannah Campbell
hcampbell@affinipay.com
512-716-8564
www.lawpay.com

CREDIT COUNSELING

Advantage Credit Counseling Service

Heather Murray
hmurray@advantageccs.org
412-390-1327
www.advantageccs.org

CRISIS COMMUNICATION

C4CS®

Oliver S. Schmidt
schmidt@c4cs.com
412-708-0940
www.c4cs.com

CRISIS MANAGEMENT

C4CS®

Oliver S. Schmidt
schmidt@c4cs.com
412-708-0940
www.c4cs.com

CUSTODY EVALUATIONS

Bliss Psychological Services, LLC

Beth Bliss, Psy.D.
bbliss@blisspsychological.org
412-780-8939
www.bethbliss.org

CYBERSECURITY

bit-x-bit, LLC

John Unice
info@bit-x-bit.com
412-325-4033
www.bit-x-bit.com/About-Us.pdf

C4CS®

Oliver S. Schmidt
schmidt@c4cs.com
412-708-0940
www.c4cs.com

FSA Consulting

Evan H. Stein
support@fsaconsulting.us
412-228-3100
<https://fsaconsulting.us>

Plummer Slade, Inc.

Alicia Slade
slade@plummerslade.com
412-261-5600
www.plummerslade.com

Shred America Iron City

Jake Sonnekler
jake@shredamerica.com
412-676-4869
www.ShredAmerica.com



NETWORK

DEPOSITION SERVICES

Discovery to Verdict. One Reliable Source.

TEAM UP WITH YOUR **LOCAL RESOURCE**
FOR ALL OF YOUR LITIGATION NEEDS.

Court Reporting
Records Retrieval
Legal Videography
Trial Presentation
Interactive Depositions
Remote Depositions
Online Scheduling & Repository

Providing solutions for in-person and virtual settings.

BASED IN WESTERN PENNSYLVANIA.
SERVING CLIENTS NATIONWIDE.

412-281-7908 • ndsreporting.com

Gulf Tower, Suite 1101, 707 Grant Street, Pittsburgh, PA 15219



USI Affinity

Mark LeFever
mark.lefever@usi.com
610-537-1435
www.ACBA.org/Insurance

DAMAGE ANALYSIS**Gleason Experts**

Douglas S. King
dking@gleasonexperts.com
412-391-5401
www.gleasonexperts.com

Walstra Expert Witness Company, LLC

Jeroen Walstra, MA, CEA, ABVE-D
jeroenwalstra328@gmail.com
412-526-1038
www.WalstraExpertWitness.com

DAMAGE VALUATION**Gleason Experts**

Douglas S. King
dking@gleasonexperts.com
412-391-5401
www.gleasonexperts.com

HBK Valuation, Litigation & Forensics

Angelica L. Revelant, Esq., CVA
ARevelant@hbkvg.com
412-431-4460 x 3126
www.HBKvg.com

Walstra Expert Witness Company, LLC

Jeroen Walstra, MA, CEA, ABVE-D
jeroenwalstra328@gmail.com
412-526-1038
www.WalstraExpertWitness.com

DEPOSITION SERVICES**ACBA Video**

Marty Barron
mbarron@acba.org
412-261-5588
www.ACBA.org/video

AKF Technologies

depo@akf.com
412-261-2323
www.AKF.com

Network Deposition Services

Mark Vitelli
mvitelli@ndsreporting.com
412-281-7908
www.ndsreporting.com

Planet Depos

Charlie Georgi
charlie.georgi@planetdepos.com
724-366-0428
www.planetdepos.com

Planet Depos

Cindy Miklos
cindy.miklos@planetdepos.com
412-334-5465
www.planetdepos.com

DIGITAL FORENSICS**bit-x-bit, LLC**

John Unice
info@bit-x-bit.com
412-325-4033
www.bit-x-bit.com/About-Us.pdf

Forletta Consulting and Investigative Services

Larry Forletta
Larry.Forletta@fcisllc.com
412-719-2112
www.fcisllc.com

DISABILITY AND FIT-FOR-DUTY EVALUATIONS**E.L.K. Independent Medical Expert Network**

Kerry Smith
experts@elkimenetwork.com
412-545-3777
www.elkimenetwork.com

MedicoLegal, Inc./Tucker IME

Barbara Carlson
info@medicolegalgroup.com
412-276-6241
www.medicolegalgroup.com

DOCUMENT MANAGEMENT AND RETRIEVAL**bit-x-bit, LLC**

John Unice
info@bit-x-bit.com
412-325-4033
www.bit-x-bit.com/About-Us.pdf

CounselStack

Von Wooding
ai@counselstack.com
724-769-0772
www.CounselStack.com

FSA Consulting

Evan H. Stein
support@fsaconsulting.us
412-228-3100
https://fsaconsulting.us

Harris Investigations, LLC

Michele Harris
harrisinvestigationsllc@yahoo.com
888-484-9827
www.HarrisInvestigations.net

Network Deposition Services

Mark Vitelli
mvitelli@ndsreporting.com
412-281-7908
www.ndsreporting.com



FIRST CLASS CATERERS



CORPORATE & EVENT CATERING
COCKTAIL RECEPTIONS

PRIVATE CATERING
WEDDING CATERING

From inflight services, to an intimate dinner for ten or lavish celebrations for 500 every dish from FCC is served with a sense of style and occasion, whether you want to nibble, snack, feast or fine dine.

With an eye for detail and love for fabulous food, FCC has created a reputation over the last 15 plus years for delivering phenomenal events and impeccable service with an added personal touch.

www.FirstClassCaterers.com
412.494.0555 | orders@firstclasscaterers.com



Reliable expertise

WE OWN IT.

CEC provides high-quality engineering and Environmental consulting services to the Greater Pittsburgh legal community.

We are accessible, responsive, and invested in our work.
You get the support you need — when you need it.

Headquartered in Pittsburgh
Offices Nationwide
800.365.2324
www.cecinc.com



Civil & Environmental Consultants, Inc.



Tetra Tech's innovative, sustainable ***Leading with Science®*** solutions help our clients reach their goals.



We are a leading provider of environmental consulting and engineering services with a local presence and offices worldwide, supporting our industrial clients across major market sectors including energy, manufacturing, oil and gas, and mining. We can help you with solutions in:

- Due diligence
- Engineering and design
- Emerging contaminants
- Health and safety
- Management systems
- Permitting
- Regulatory Compliance
- Remediation
- Renewable energy
- Sustainability

661 Andersen Drive
Suite 200
Pittsburgh, PA 15220
tetrattech.com

Scott Nesbit, P.E.
Pittsburgh Operations Manager
(412) 921-7134
scott.nesbit@tetrattech.com

Jeff Hassen, P.G.
Commercial Program Director
(412) 921-7073
jeff.hassen@tetrattech.com

Joe Senita, P.G.
Brownfields Manager
(412) 921-8825
joe.senita@tetrattech.com

Shred America Iron City

Jake Sonnekler
jake@shredamerica.com
412-676-4869
www.ShredAmerica.com

SimpleLaw

Dorothy Radke
Dorothy@SimpleLaw.com
312-560-5123
www.SimpleLaw.com

**DUE DILIGENCE –
INVESTIGATIVE****Civil & Environmental Consultants, Inc.**

Thomas Walsh, P.G.
twalsh@cecinc.com
412-429-2324
www.cecinc.com

Finley Consulting & Investigations, Inc.

Christopher J. Finley
cfinley@finleyinvestigations.com
412-364-8034
www.finleyinvestigations.com

**Forletta Consulting and
Investigative Services**

Larry Forletta
Larry.Forletta@fcisllc.com
412-719-2112
www.fcisllc.com

Harris Investigations, LLC

Michele Harris
harrisinvestigationllc@yahoo.com
888-484-9827
www.HarrisInvestigations.net

Tetra Tech, Inc.

Jeffrey A. Hassen, P.G.
jeff.hassen@tetrattech.com
412-921-7073
www.tetrattech.com

E-DISCOVERY**bit-x-bit, LLC**

John Unice
info@bit-x-bit.com
412-325-4033
www.bit-x-bit.com/About-Us.pdf

CounselStack

Von Wooding
ai@counselstack.com
724-769-0772
www.CounselStack.com

Precise Discovery

William Sacconi
sacconib@precise-law.com
412-281-8699 x 110
www.precise-law.com

ECONOMIC CONSULTING**FHR, LLC (Forensic Human
Resources)**

R. Matthew Hanak, II, JD, MBA
matt@forensichr.net
412-720-1158
www.forensichr.com

MDD Forensic Accountants

Jeffrey Belack
jbelack@mdd.com
412-220-7167
www.mdd.com

MDD Forensic Accountants

Marguerite Hart
mhart@mdd.com
412-220-7167
www.mdd.com

Walstra Expert Witness Company, LLC

Jeroen Walstra, MA, CEA, ABVE-D
jeroenwalstra328@gmail.com
412-526-1038
www.WalstraExpertWitness.com

**ECONOMIC DAMAGES
CONSULTING****Gleason Experts**

Douglas S. King
dking@gleasonexperts.com
412-391-5401
www.gleasonexperts.com

EMPLOYMENT SERVICES**ACBA Job Board**

Jennifer Pulice
jpulice@acba.org
412-402-6623
jobs.acba.org

ACBA Legal Employment Services

Jennifer Pulice
jpulice@acba.org
412-402-6623
www.PittsburghLegalJobs.com

LHH Recruitment Solutions

Mary Welsh
Mary.Welsh@lhh.com
412-758-7511
www.lhh.com

McClelland Legal Search

Dianne McClelland, Esq.
dianne@mcclellandlegalsearch.com
412-281-6609
www.mcclellandlegalsearch.com

ENERGY CONSULTANTS**Civil & Environmental Consultants, Inc.**

Thomas Walsh, P.G.
twalsh@cecinc.com
412-429-2324
www.cecinc.com

Finding Direction in your finances.

**Take control of your financial
world using our approach to
comprehensive planning...**

**...it's as simple as identifying
your goals and building the
map to help achieve them.**



Timothy F. Cummings

Compass Rose
FINANCIAL



www.compassrose.financial

412.562.4427

Securities, investment advisory and financial planning services offered through qualified registered
representatives of MML Investors Services, LLC., Member SIPC.
Supervisory Office: Six PPG Place, Suite 600, Pittsburgh, PA 15222, Phone: 412-562-1600



Our expertise goes well beyond the numbers.

As the world's premier forensic accounting firm with over 40 offices on 5 continents, MDD is the choice of counsel around the world. We have over 20 US offices that can provide litigation services and expert witness testimony in courts, arbitrations and mediations.

Our expertise includes:

- > Business Valuations
- > Business & Shareholder Disputes
- > Class Action Certifications/Damages
- > Construction Disputes
- > White Collar Crime
- > Employment Litigation
- > Fraud/Ponzi Investigations
- > Intellectual Property/Patent Infringement
- > Lost Profits
- > Personal Injury/Wrongful Death

To learn more about our litigation expertise, please visit us at mdd.com or contact us today:

Marguerite Hart, CPA, CFE | Partner | mhart@mdd.com

Jeff Belack, CPA | Partner | jbelack@mdd.com

428 Boulevard of the Allies, Suite 400, Pittsburgh, PA 15219 | P 412.220.7167



Making Numbers Make Sense > mdd.com

Help your case with our “weather detectives”



Investigating historical weather events requires more than just a chart with data. AccuWeather’s expert forensic meteorologists deliver unmatched support across a variety of case types—**slip-and-falls, automobile accidents, insurance disputes, property damage, personal injury, criminal cases, wrongful death and others**—to aid you in providing your clients with a professional determination of the weather.

Our team includes a PhD and more AMS board Certified Consulting Meteorologists than any other company. AccuWeather is a recognized brand worldwide and a credible source that a jury may already use through our mobile app, Accuweather.com, TV network, radio and newspapers.



[afb.accuweather.com/
forensic-services](http://afb.accuweather.com/forensic-services)

John D. Lavin, CCM
Director, Forensic Services
Certified Consulting Meteorologist
John.Lavin@accuweather.com
814-235-8626

ENVIRONMENTAL CONSULTANTS/EXPERTS

Civil & Environmental Consultants, Inc.

Thomas Walsh, P.G.
twalsh@cecinc.com
412-429-2324
www.cecinc.com

Tetra Tech, Inc.

Jeffrey A. Hassen, P.G.
jeff.hassen@tetrattech.com
412-921-7073
www.tetrattech.com

ENVIRONMENTAL, SOCIAL AND GOVERNANCE (ESG) CONSULTING

Tetra Tech, Inc.

Jeffrey A. Hassen, P.G.
jeff.hassen@tetrattech.com
412-921-7073
www.tetrattech.com

ESTATE LIQUIDATION

Caring Transitions

Roberto Cirilo
rcirilo@caringtransitions.com
412-709-5907
www.caringtransitionsofswp.com

Key Private Bank

Kim Cantalamessa
Kim_Cantalamessa@keybank.com
412-807-2755
www.KeyBank.com

EVENT SPACE

The Joinery

Dan Wagner
dan.wagner@sagehospitalitygroup.com
412-339-1885
www.JoineryHotel.com

FINANCIAL ACCOUNTING

Gleason Experts

Mark M. Gleason
mark@gleasonexperts.com
412-391-9010
www.gleasonexperts.com

Gleason Experts

William G. Krieger
wkrieger@gleasonexperts.com
412-391-5404
www.gleasonexperts.com

Grossman Yanak & Ford LLP

Mary Lou Harrison
harrison@gyf.com
412-338-9308 x 247
https://gyf.com

RSM US

Andrew Kelly
Andrew.Kelly@rsmus.com
717-725-4290
www.rsmus.com

FINANCIAL EXPERTS

FHR, LLC (Forensic Human Resources)

R. Matthew Hanak, II, JD, MBA
matt@forensichr.net
412-720-1158
www.forensichr.com

Fragasso Financial Advisors

Marsha Posset
mposset@fragassoadvisors.com
412-227-3206
www.FragassoAdvisors.com

Gleason Experts

Mark M. Gleason
mark@gleasonexperts.com
412-391-9010
www.gleasonexperts.com

Gleason Experts

William G. Krieger
wkrieger@gleasonexperts.com
412-391-5404
www.gleasonexperts.com

Gleason Experts

Mark W. Medwig
mmedwig@gleasonexperts.com
412-427-1422
www.gleasonexperts.com

Grossman Yanak & Ford LLP

Mary Lou Harrison
harrison@gyf.com
412-338-9308 x 247
https://gyf.com

HBK Valuation, Litigation & Forensics

Angelica L. Revelant, Esq., CVA
ARevelant@hbkvg.com
412-431-4460 x 3126
www.HBKvg.com

LitCon Group

Stephen Dowd
sdowd@litcongroup.com
412-613-4719
www.LitConGroup.com

LitCon Group

Bryan DiLucente
bdilucente@litcongroup.com
412-338-6704
www.LitConGroup.com

MDD Forensic Accountants

Jeffrey Belack
jbelack@mdd.com
412-220-7167
www.mdd.com

MDD Forensic Accountants

Marguerite Hart
mhart@mdd.com
412-220-7167
www.mdd.com

COYOTE ANALYTICS

A  SurePoint® Solution



Intuitive Legal Software with You in Mind

Financial management solutions
to help you streamline operations
and better serve clients

[Learn More](#)

ASK ABOUT
CARDINAL LIFECARE
SETTLEMENT SERVICES!

Life Care Plans/Critiques	Case Management
Medical Cost Projections	Medical Consulting
Vocational Evaluations	Medical Expert Witness
Forensic Economist	Medical Bill Analysis



CARDINAL
LIFECARE CONSULTING LLC

www.CardinalLifeCare.com
Kelly@CardinalLifeCare.com | 724.487.0519



**Leaders in Strategic Communication
and Crisis Management**

**Your resource specializing in strategic communication
and crisis management – providing customized consulting,
skills building and executive coaching services to
corporate, nonprofit and government clients worldwide.**

Strategic Communication

Crisis Communication

Risk Communication

Litigation Communication

Employee Communication

Change Communication

Media Relations

Internet & Media Monitoring

Media Skills & Spokesperson Training

Executive Communication Coaching

Presentation Skills Development

Stakeholder Management

Issues Management

Reputation Management

Crisis Management Planning

Crisis Management Training & Testing

Crisis Management Response

& Much More

**Headquartered in Pittsburgh
Serving Clients Worldwide**

**www.c4cs.com
info@c4cs.com**

**Need help now?
888-261-9964**

RSM US

Andrew Kelly
Andrew.Kelly@rsmus.com
717-725-4290
www.rsmus.com

FINANCIAL PLANNING**Baird**

Elisa Cavalier
ecavalier@rwbaird.com
412-633-1688
www.rwbaird.com

Compass Rose Financial

Timothy Cummings
timothycummings@financialguide.com
412-562-4427
www.compassrose.financial

Fort Pitt Capital Group LLC

Bevin Baker
bbaker@fortpittcapital.com
412-921-1822
www.fortpittcapital.com

Fragasso Financial Advisors

Marsha Posset
mposset@fragassoadvisors.com
412-227-3206
www.FragassoAdvisors.com

Key Private Bank

Kim Cantalamessa
Kim_Cantalamessa@keybank.com
412-807-2755
www.KeyBank.com

Shorebridge Wealth Management

Reed Natali
Natali@shorebridgewm.com
412-742-4862
www.shorebridgewm.com

WesBanco Trust and Investment Services

Harold Migias
migias@wesbanco.com
724-909-7055
www.wesbanco.com

FIRE ORIGIN AND CAUSE**Rimkus**

Jennie Weakland
jweakland@rimkus.com
330-618-6041
www.Rimkus.com

FORENSIC ACCOUNTING**FHR, LLC (Forensic Human Resources)**

R. Matthew Hanak, II, JD, MBA
matt@forensichr.net
412-720-1158
www.forensichr.com

Gleason Experts

William G. Krieger
wkrieger@gleasonexperts.com
412-391-5404
www.gleasonexperts.com

HBK Valuation, Litigation & Forensics

Angelica L. Revelant, Esq., CVA
ARevelant@hbkvg.com
412-431-4460 x 3126
www.HBKvg.com

LitCon Group

Stephen Dowd
sdowd@litcongroup.com
412-613-4719
www.LitConGroup.com

LitCon Group

Seth Murray
smurray@litcongroup.com
724-831-2437
www.LitConGroup.com

MDD Forensic Accountants

Jeffrey Belack
jbelack@mdd.com
412-220-7167
www.mdd.com

MDD Forensic Accountants

Marguerite Hart
mhart@mdd.com
412-220-7167
www.mdd.com

FORENSIC ENGINEERS**Rimkus**

Jennie Weakland
jweakland@rimkus.com
330-618-6041
www.Rimkus.com

FORENSIC HUMAN RESOURCES**FHR, LLC (Forensic Human Resources)**

R. Matthew Hanak, II, JD, MBA
matt@forensichr.net
412-720-1158
www.forensichr.com

FORENSIC INVESTIGATORS**bit-x-bit, LLC**

John Unice
info@bit-x-bit.com
412-325-4033
www.bit-x-bit.com/About-Us.pdf

Finley Consulting & Investigations, Inc.

Christopher J. Finley
cfinley@finleyinvestigations.com
412-364-8034
www.finleyinvestigations.com



SimpleLaw.com®

Simple for Lawyers. Simple for Clients.

CASE AND PRACTICE MANAGEMENT SOFTWARE

ACBA
Member
Discounts



Why SimpleLaw?



Our tech is built to create connections, with clients, attorneys, and within your firm.



We are dedicated to off the charts customer support. We're here to help.



Seriously streamline the admin stuff, so you have more time to practice law.

Key Benefits

- ✓ Customizable tools to fit your firm
- ✓ Optional client portal, 24/7 access
- ✓ Time tracking, invoicing, and online client payment
- ✓ Document Automation, Custom Fields, and more.

About SimpleLaw

SimpleLaw is created by attorneys, for attorneys and their clients. We built the platform our law firm needed and clients wanted. We know your pain points and solve them, leveraging the ever evolving power of technology.

We don't like 'if it's not broken, don't fix it.' We prefer 'if there's a better way, let's do it. And make it simple, too.'

www.SimpleLaw.com

Hello@SimpleLaw.com



FSA
Consulting

Clients rely on your expertise. **You can rely on us.**

Law firms just like yours count on
FSA Consulting for comprehensive and
customized IT solutions.

Do IT Right

MANAGED IT SERVICES | BUSINESS PHONE | MANAGED WI-FI | BUSINESS INTERNET

FSA Consulting is powered by Frank and Stein Associates.

A proud member of the  Consultants Network

A portrait of Larry Forletta, a middle-aged man with a mustache, wearing a dark pinstripe suit, white shirt, and striped tie. He has his arms crossed and is looking directly at the camera. The background is a blurred outdoor setting with brick buildings.

PRIVATE INVESTIGATORS WITH A WORLDWIDE REACH

FORMER FEDERAL AGENT

Trust our 25 years of results-driven experience working with attorneys to help you win your case, improve plea offerings and influence filing decisions

- Criminal Law
- Corporate Investigations
- Family Law
- Employment Disputes
- Civil Investigations
- Background Services
& Polygraph

OUR SERVICES ARE TAILORED TO YOUR NEEDS



FORLETTA
INVESTIGATIVE/SECURITY
CONSULTANT

Larry Forletta FCIS LLC, DEA Retired
Insured, Licensed and Bonded

FCISLLC.COM

412-719-2112

larry.forletta@fcisllc.com

FORENSIC METEOROLOGY

AccuWeather Forensics

John D. Lavin, CCM
John.Lavin@accuweather.com
814-235-8626
<https://afb.accuweather.com/forensic-services>

FORENSIC PSYCHOLOGISTS

Bliss Psychological Services, LLC

Beth Bliss, Psy.D.
bbliss@blisspsychological.org
412-780-8939
www.bethbliss.org

Makin Wellness

Sara Makin, MEd, LPC, NCC
info@makinwellness.com
833-274-HEAL
www.MakinWellness.com

GIFTS

Henne Jewelers

John Henne
john@hennejewelers.com
412-682-0226
www.hennejewelers.com

GUARDIANSHIPS

Aligned Partners Trust Company

Tom Crowley
TCrowley@alignedpartners.com
412-258-3590 x 112
www.AlignedPartners.com

Aligned Partners Trust Company

Lisa Dougan
LDougan@alignedpartners.com
412-258-3590 x 109
www.AlignedPartners.com

On Your Behalf by Ursuline Support Services

Robert Marbella
rmarbella@ursulinesupport.org
412-880-3552
www.UrsulineOnYourBehalf.org

River Communities Fiduciary Services, Inc.

Eric O'Connor
eoconnor@rcfstrusts.org
724-385-8492
www.rcfstrusts.org

WesBanco Trust and Investment Services

Harold Migias
migias@wesbanco.com
724-909-7055
www.wesbanco.com

HAND AND NERVE INJURY EXPERTS

Pittsburgh Hand and Nerve, P.C.

Alexander Spiess, MD
amspiess@msn.com
412-337-0806
www.pittsburghhandandnerve.com

HEALTH AND WELLNESS

Makin Wellness

Sara Makin, MEd, LPC, NCC
info@makinwellness.com
833-274-HEAL
www.MakinWellness.com

HOTELS

The Joinery

Dan Wagner
dan.wagner@sagehospitalitygroup.com
412-339-1885
www.JoineryHotel.com

HUMAN RESOURCES

USI Affinity

Mark LeFever
mark.lefever@usi.com
610-537-1435
www.ACBA.org/Insurance

INDEPENDENT MEDICAL EXAMINATION (IME)

E.L.K. Independent Medical Expert Network

Kerry Smith
experts@elkimenetwork.com
412-545-3777
www.elkimenetwork.com

MedicoLegal, Inc./Tucker IME

Barbara Carlson
info@medicolegalgroup.com
412-276-6241
www.medicolegalgroup.com

INSURANCE SERVICES

USI Affinity

Mark LeFever
mark.lefever@usi.com
610-537-1435
www.ACBA.org/Insurance

INTERNET AND NETWORK SERVICES

FSA Consulting

Evan H. Stein
support@fsaconsulting.us
412-228-3100
<https://fsaconsulting.us>

Plummer Slade, Inc.

Alicia Slade
slade@plummerslade.com
412-261-5600
www.plummerslade.com



WITH SO MUCH AT STAKE,
YOU NEED TO KNOW

WHAT HAPPENED?

YOU HAVE QUESTIONS. WE PROVIDE ANSWERS.

Numerous factors can lead to serious construction-site accidents, from inadequate worker training and safety procedures to faulty products and heavy equipment. Rimkus has decades of forensic experience investigating and evaluating injury accidents across the U.S. and in many foreign countries. Our construction experts and engineers conduct in-depth investigations to determine what happened and can help provide solutions for recovery. If you're facing a complex forensic challenge of any kind, count on us to uncover the facts.



World-class. Global reach.

800.580.3228

rimkus.com



It's your journey. We're here to help you get there.

The team of professionals at Key Private Bank provides wealth management and customized services including:

- Investment management
- Financial planning
- Insurance management
- Customized financing
- Trust and estate planning
- Credit and banking

To learn more, contact Kim Cantalamessa at 412-807-2755 or kim_cantalamessa@keybank.com, or visit key.com/getthere.

Key Private Bank



Key Private Bank is part of KeyBank National Association. Bank and trust products are provided by KeyBank. Member FDIC and Equal Housing Lender.

Investment products are:

NOT FDIC INSURED • NOT BANK GUARANTEED • MAY LOSE VALUE • NOT A DEPOSIT
• NOT INSURED BY ANY FEDERAL OR STATE GOVERNMENT AGENCY

Key.com is a federally registered service mark of KeyCorp. ©2023 KeyCorp.
220323-1518019

LAWPAY[®]

AN AFFINIPAY SOLUTION

+



Member
Benefit
Provider

“I love LawPay! I’m not sure why I waited so long to get it set up.” – Law Firm in Ohio

Trusted by 50,000 law firms, LawPay is a simple, secure solution that allows you to easily accept credit and eCheck payments online, in person, or through your favorite practice management tools.



22% increase in cash flow with online payments



Vetted and approved by all 50 state bars, 70+ local and specialty bars, the ABA, and the ALA



62% of bills sent online are paid in 24 hours

YOUR FIRM LOGO HERE

Trust Payment
IOLTA Deposit

New Case Reference

**** * 9995

TOTAL: \$1,500.00

VISA



POWERED BY
LAWPAY

eCheck

DISCOVER

PAY ATTORNEY

**PAYMENT
RECEIVED**



Get started at
lawpay.com/acba
888-934-0754

Data based on an average of firm accounts
receivables increases using online billing solutions.

LawPay is a registered agent of Synovus Bank, Columbus,
GA., and Fifth Third Bank, N.A., Cincinnati, OH.

INVESTMENT MANAGEMENT

AmeriServ Trust and Financial Services Co.

Scott Porterfield
sporterfield@amerserv.com
724-493-6847
www.AmeriServ.com

Baird

Elisa Cavalier
ecavalier@rwbaird.com
412-633-1688
www.rwbaird.com

Compass Rose Financial

Timothy Cummings
timothycummings@financialguide.com
412-562-4427
www.compassrose.financial

Fort Pitt Capital Group LLC

Bevin Baker
bbaker@fortpittcapital.com
412-921-1822
www.fortpittcapital.com

Fragasso Financial Advisors

Marsha Posset
mposset@fragassoadvisors.com
412-227-3206
www.FragassoAdvisors.com

Key Private Bank

Kim Cantalamessa
Kim_Cantalamessa@keybank.com
412-807-2755
www.KeyBank.com

Shorebridge Wealth Management

Reed Natali
Natali@shorebridgewm.com
412-742-4862
www.shorebridgewm.com

IP LITIGATION CONSULTING

Gleason Experts

Ivan T. Hofmann
ihofmann@gleasonip.com
412-391-9203
www.gleasonexperts.com

MDD Forensic Accountants

Jeffrey Belack
jbelack@mdd.com
412-220-7167
www.mdd.com

MDD Forensic Accountants

Marguerite Hart
mhart@mdd.com
412-220-7167
www.mdd.com

IT SERVICES

FSA Consulting

Evan H. Stein
support@fsaconsulting.us
412-228-3100
https://fsaconsulting.us

Plummer Slade, Inc.

Alicia Slade
slade@plummerslade.com
412-261-5600
www.plummerslade.com

JURY DUE DILIGENCE

Forletta Consulting and Investigative Services

Larry Forletta
Larry.Forletta@fcisllc.com
412-719-2112
www.fcisllc.com

JURY INTELLIGENCE REPORTING

Forletta Consulting and Investigative Services

Larry Forletta
Larry.Forletta@fcisllc.com
412-719-2112
www.fcisllc.com

LAW FIRM CONSULTING

CounselStack

Von Wooding
ai@counselstack.com
724-769-0772
www.CounselStack.com

Thomson Reuters – FindLaw

Mark Melago
mark.melago@thomsonreuters.com
412-601-0734
www.LawyerMarketing.com

Thomson Reuters – FindLaw

Justin Niedzwecki
justin.niedzwecki@thomsonreuters.com
412-980-0915
www.LawyerMarketing.com

Thomson Reuters – Westlaw

Christine Martier
Christine.Martier@thomsonreuters.com
412-551-7251
www.ACBA.org/westlaw

LAW FIRM SOFTWARE

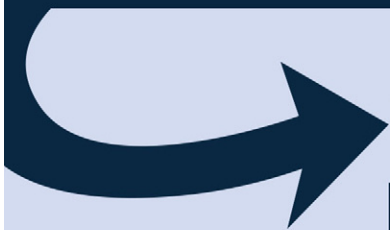
bit-x-bit, LLC

John Unice
info@bit-x-bit.com
412-325-4033
www.bit-x-bit.com/About-Us.pdf

When You Need:

- Social Media Searches
- Scene/Vehicle Photos
- Motor Vehicle Searches
- Asset Searches
- Surveillance
- Process/Courier Services
- Background Checks
- Employee Terminations
- Pre-Employment Searches
- Witness Statements
- Litigation Support
- Product Liability Investigations
- Record Searches/Procurement
- Mobile Notary *(In some locations)*
- Skip Tracing
- Insurance Investigations
- Medical Malpractice Investigations
- *And Much More!*

You Need...



HARRIS INVESTIGATIONS

Corporate Office: P.O. Box 304, Lansdale, PA 19446

LARGE ENOUGH TO SERVE, YET SMALL ENOUGH TO CARE

Covering PA, NJ, DE, MD, & WV



Servicing Attorneys, Businesses, Insurance Carriers & Individuals

DE: Lewes, Wilmington IN: Lagrange NJ: Asbury Park, Leesburg, Trenton, Woodbridge

MD: Cumberland MI: Berkley, Grand Rapids, Lansing, Quincy OH: Hanoverton

PA: Bethlehem, Enola, Erie, Johnstown, Kingston, Leesport, Meadville, Norristown,
Philadelphia, Pittsburgh, Warren, Williamsport

WV: Charleston, Crawley, Hedgesville, Morgantown, Saint Albans, Vienna

*Harris Investigations, LLC is a Women-Owned Business operating in Pennsylvania, New Jersey,
Delaware, Maryland, Michigan and West Virginia*

www.HarrisInvestigations.net

(888) 484-9827 HarrisInvestigationsllc@yahoo.com

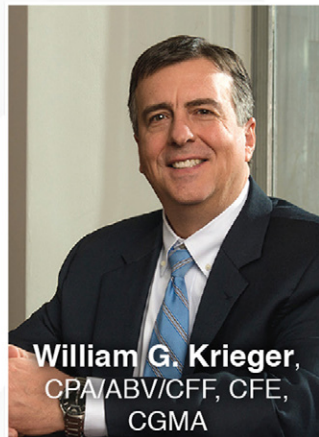
“When credibility is critical, choose a partner that inspires confidence.”

The Gleason team has an impressive track record of providing expert testimony in support of our claims and analyses. When complex financial problems arise, we create clarity and focus.

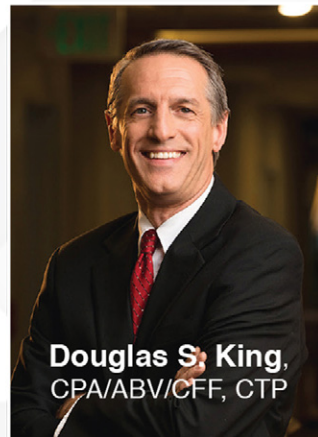
We're proud of our well-earned reputation as a trusted source of valuable financial perspectives, precise technical excellence, and responsive client service.



Mark M. Gleason,
CPA/ABV/CFF



William G. Krieger,
CPA/ABV/CFF, CFE,
CGMA



Douglas S. King,
CPA/ABV/CFF, CTP



**Jerome ("Jeb") B.
Schmitt, Jr.,**
CPA/ABV/CFF, CFE

**EXPERT
WITNESS
TESTIMONY**

**BUSINESS
VALUATION**

**FORENSIC
ACCOUNTING**

**BUSINESS
REORGANIZATION
SUPPORT**



GLEASON

VALUE BEYOND DISPUTE

One Gateway Center, Suite 525
420 Ft. Duquesne Blvd.
Pittsburgh, PA 15222

412.391.9010 | gleasonexperts.com

LawPay

Hannah Campbell
hcampbell@affinipay.com
512-716-8564
www.lawpay.com

Plummer Slade, Inc.

Alicia Slade
slade@plummerslade.com
412-261-5600
www.plummerslade.com

SimpleLaw

Dorothy Radke
Dorothy@SimpleLaw.com
312-560-5123
www.SimpleLaw.com

SurePoint Technologies

Lydia Flocchini
lflocchini@surepoint.com
www.surepoint.com

Thomson Reuters – Westlaw

Christine Martier
Christine.Martier@thomsonreuters.com
412-551-7251
www.ACBA.org/westlaw

LAW LIBRARIES

Allegheny County Law Library

Patricia Horvath
horvathp@carnegielibrary.org
412-350-5353
www.acllib.org

LAWYERS PROFESSIONAL LIABILITY COVERAGE

USI Affinity

Mark LeFever
mark.lefever@usi.com
610-537-1435
www.ACBA.org/Insurance

LEGAL NURSE CONSULTANTS

CARDINAL LifeCare Consulting

Kelly K. Campbell
kelly@cardinallifecare.com
724-487-0519
www.cardinallifecare.com

E.L.K. Independent Medical Expert Network

Kerry Smith
experts@elkimenetwork.com
412-545-3777
www.elkimenetwork.com

LEGAL RESEARCH

Allegheny County Law Library

Patricia Horvath
horvathp@carnegielibrary.org
412-350-5353
www.acllib.org

CounselStack

Von Wooding
ai@counselstack.com
724-769-0772
www.CounselStack.com

Harris Investigations, LLC

Michele Harris
harrisinvestigationllc@yahoo.com
888-484-9827
www.HarrisInvestigations.net

Thomson Reuters – Westlaw

Christine Martier
Christine.Martier@thomsonreuters.com
412-551-7251
www.ACBA.org/westlaw

LIEN RESOLUTION

DCA Lien Resolution

Danielle S. Burke, Esq.
danielle@dcalien.com
412-229-7654
www.DCALien.com

LIFECARE PLANS

CARDINAL LifeCare Consulting

Kelly K. Campbell
kelly@cardinallifecare.com
724-487-0519
www.cardinallifecare.com

E.L.K. Independent Medical Expert Network

Kerry Smith
experts@elkimenetwork.com
412-545-3777
www.elkimenetwork.com

LITIGATION SUPPORT SERVICES

ACBA Video

Marty Barron
mbarron@acba.org
412-261-5588
www.ACBA.org/video

AKF Technologies

depo@akf.com
412-261-2323
www.AKF.com

bit-x-bit, LLC

John Unice
info@bit-x-bit.com
412-325-4033
www.bit-x-bit.com/About-Us.pdf

C4CS®

Oliver S. Schmidt
schmidt@c4cs.com
412-708-0940
www.c4cs.com

Civil & Environmental Consultants, Inc.

Thomas Walsh, P.G.
twalsh@cecinc.com
412-429-2324
www.cecinc.com

E.L.K. Independent Medical Expert Network

Kerry Smith
experts@elkimenetwork.com
412-545-3777
www.elkimenetwork.com

Finley Consulting & Investigations, Inc.

Christopher J. Finley
cfinley@finleyinvestigations.com
412-364-8034
www.finleyinvestigations.com

Forletta Consulting and Investigative Services

Larry Forletta
Larry.Forletta@fcisllc.com
412-719-2112
www.fcisllc.com

Grossman Yanak & Ford LLP

Mary Lou Harrison
harrison@gyf.com
412-338-9308 x 247
https://gyf.com

Harris Investigations, LLC

Michele Harris
harrisinvestigationsllc@yahoo.com
888-484-9827
www.HarrisInvestigations.net

HBK Valuation, Litigation & Forensics

Angelica L. Revelant, Esq., CVA
ARevelant@hbkvg.com
412-431-4460 x 3126
www.HBKvg.com

Litigation Advantage

Karen A. Begley
kbegley@litadvantage.com
412-486-3325
www.litadvantage.com

MDD Forensic Accountants

Jeffrey Belack
jbelack@mdd.com
412-220-7167
www.mdd.com

MDD Forensic Accountants

Marguerite Hart
mhart@mdd.com
412-220-7167
www.mdd.com

Network Deposition Services

Mark Vitelli
mvitelli@ndsreporting.com
412-281-7908
www.ndsreporting.com

Planet Depos

Charlie Georgi
charlie.georgi@planetdepos.com
724-366-0428
www.planetdepos.com

Planet Depos

Cindy Miklos
cindy.miklos@planetdepos.com
412-334-5465
www.planetdepos.com

M&A AND TRANSACTION ADVISORY**C4CS®**

Oliver S. Schmidt
schmidt@c4cs.com
412-708-0940
www.c4cs.com

Civil & Environmental Consultants, Inc.

Thomas Walsh, P.G.
twalsh@cecinc.com
412-429-2324
www.cecinc.com

Gleason Experts

Mark M. Gleason
mark@gleasonexperts.com
412-391-9010
www.gleasonexperts.com

Gleason Experts

William G. Krieger
wkrieger@gleasonexperts.com
412-391-5404
www.gleasonexperts.com

Grossman Yanak & Ford LLP

Mary Lou Harrison
harrison@gyf.com
412-338-9308 x 247
https://gyf.com

Key Private Bank

Kim Cantalamessa
Kim_Cantalamessa@keybank.com
412-807-2755
www.KeyBank.com

RSM US

Nick Dehainaut
Nick.Dehainaut@rsmus.com
412-999-7302
www.rsmus.com

Tetra Tech, Inc.

Jeffrey A. Hassen, P.G.
jeff.hassen@tetrattech.com
412-921-7073
www.tetrattech.com

MARKETING SERVICES

ACBA Attorney-to-Attorney Marketing

Jennifer Pulice
jpulice@acba.org
412-402-6623
www.ACBA.org/partnerships

ACBA Lawyer Referral Service

Whitney Hughes
whughes@acba.org
412-261-5555
www.GetAPittsburghLawyer.com

ACBA Website Design Program

James Piaggio
jpiaggio@acba.org
412-402-6653
jpiaggio@acba.org

Thomson Reuters – FindLaw

Mark Melago
mark.melago@thomsonreuters.com
412-601-0734
www.LawyerMarketing.com

Thomson Reuters – FindLaw

Justin Niedzwecki
justin.niedzwecki@thomsonreuters.com
412-980-0915
www.LawyerMarketing.com

MEDIA TRAINING/COACHING

C4CS®

Oliver S. Schmidt
schmidt@c4cs.com
412-708-0940
www.c4cs.com

MEDICAL CHRONOLOGIES/TIMELINES

E.L.K. Independent Medical Expert Network

Kerry Smith
experts@elkimenetwork.com
412-545-3777
www.elkimenetwork.com

MEDICAL COST PROJECTIONS

CARDINAL LifeCare Consulting

Kelly K. Campbell
kelly@cardinallifecare.com
724-487-0519
www.cardinallifecare.com

E.L.K. Independent Medical Expert Network

Kerry Smith
experts@elkimenetwork.com
412-545-3777
www.elkimenetwork.com

MEDICAL EXPERT WITNESSES

Burton Singerman, MD, LLC

Dr. Burton Singerman
info@burtsingerman.com
412-342-8630
www.burtsingerman.com

E.L.K. Independent Medical Expert Network

Kerry Smith
experts@elkimenetwork.com
412-545-3777
www.elkimenetwork.com

MedicoLegal, Inc./Tucker IME

Barbara Carlson
info@medicolegalgroup.com
412-276-6241
www.medicolegalgroup.com

Pittsburgh Hand and Nerve, P.C.

Alexander Spiess, MD
amspiess@msn.com
412-337-0806
www.pittsburghhandandnerve.com

MEDICAL RECORD REVIEWS

E.L.K. Independent Medical Expert Network

Kerry Smith
experts@elkimenetwork.com
412-545-3777
www.elkimenetwork.com

MEDICARE SET-ASIDES

E.L.K. Independent Medical Expert Network

Kerry Smith
experts@elkimenetwork.com
412-545-3777
www.elkimenetwork.com

EZ Scripts Pharmacy

Stacy Krauth
stacyk@ezrxmeds.com
412-930-4572
www.EZRxMeds.com

MEETING SPACE

ACBA Conference Room Rental

Barbara Brumbaugh
bbrumbaugh@acba.org
412-402-6612
www.ACBA.org/offices

AKF Technologies

depo@akf.com
412-261-2323
www.AKF.com



Do face-to-face on your
time and terms.

Dollar Bank Private Banking delivers established and experienced banking services with personalized attention for you and your law firm. Your dedicated private banker will meet at your home or office to make the most of your time – we give you red carpet level service that goes above and beyond expectations.

Do more with Dollar Bank Private Banking:

- Traditional banking services
- Diverse lending solutions
- Real-time business solutions
- A local, accessible team that answers when you call
- And more!

Contact Melissa Reft Krawczynski today!



Melissa Reft Krawczynski
Vice President, Private Banking
NMLS: 476911
412-261-8288
MKrawczynski807@dollarbank.com

PLUMMER SLADE, INC.

Computer Networking & IT Solutions

*Celebrating over 30+ years of
High-Quality, Excellent Service*



 www.plummerslade.com

 412-261-5600

***Providing Computer Networking & Managed
Services for more than 100+ law firms
in the Pittsburgh and surrounding area.***

Endorsed
ACBA

429 Fourth Avenue, Suite 500 Pittsburgh PA 15219

The Joinery

Dan Wagner
dan.wagner@sagehospitalitygroup.com
412-339-1885
www.JoineryHotel.com

Network Deposition Services

Mark Vitelli
mvitelli@ndsreporting.com
412-281-7908
www.ndsreporting.com

Planet Depos

Charlie Georgi
charlie.georgi@planetdepos.com
724-366-0428
www.planetdepos.com

Planet Depos

Cindy Miklos
cindy.miklos@planetdepos.com
412-334-5465
www.planetdepos.com

MESSENGER SERVICES**Harris Investigations, LLC**

Michele Harris
harrisinvestigationllc@yahoo.com
888-484-9827
www.HarrisInvestigations.net

MORTGAGE SERVICES**AmeriServ Trust and Financial Services Co.**

Scott Porterfield
sporterfield@ameriserv.com
724-493-6847
www.AmeriServ.com

Dollar Bank

Melissa Krawczynski
MKrawczynski807@dollarbank.com
412-261-8288
www.Dollar.Bank

Dollar Bank

Jered Pander
JPander861@dollarbank.com
412-261-7417
www.Dollar.Bank

Key Private Bank

Kim Cantalamessa
Kim_Cantalamessa@keybank.com
412-807-2755
www.KeyBank.com

WesBanco Trust and Investment Services

Harold Migias
migias@wesbanco.com
724-909-7055
www.wesbanco.com

MOVING SERVICES**Caring Transitions**

Roberto Cirilo
rcirilo@caringtransitions.com
412-709-5907
www.caringtransitionsofswp.com

NOTARIES**Harris Investigations, LLC**

Michele Harris
harrisinvestigationllc@yahoo.com
888-484-9827
www.HarrisInvestigations.net

Notary in Your Neighborhood

Carmella Wehrle
notary@notaryneighbor.com
412-287-1109
www.NotaryNeighbor.com

NOTARIES – TRAVELING**Harris Investigations, LLC**

Michele Harris
harrisinvestigationllc@yahoo.com
888-484-9827
www.HarrisInvestigations.net

Notary in Your Neighborhood

Carmella Wehrle
notary@notaryneighbor.com
412-287-1109
www.NotaryNeighbor.com

OFFICE EQUIPMENT**FSA Consulting**

Evan H. Stein
support@fsaconsulting.us
412-228-3100
https://fsaconsulting.us

OFFICE SPACE**ACBA Conference Room Rental**

Barbara Brumbaugh
bbrumbaugh@acba.org
412-402-6612
www.ACBA.org/offices

Tenant Representation Associates, Inc.

Scott Fabean
sfabean@tenrep.com
412-341-4000
www.tenrep.com

OIL AND GAS CONSULTANTS**Civil & Environmental Consultants, Inc.**

Thomas Walsh, P.G.
twalsh@cecinc.com
412-429-2324
www.cecinc.com

Tetra Tech, Inc.

Jeffrey A. Hassen, P.G.
jeff.hassen@tetrattech.com
412-921-7073
www.tetrattech.com

PHOTOGRAPHY**Harris Investigations, LLC**

Michele Harris
harrisinvestigationllc@yahoo.com
888-484-9827
www.HarrisInvestigations.net

PHYSICAL REHABILITATION**MedicoLegal, Inc./Tucker IME**

Barbara Carlson
info@medicolegalgroup.com
412-276-6241
www.medicolegalgroup.com

PLASTIC SURGERY EXPERTS**Pittsburgh Hand and Nerve, P.C.**

Alexander Spiess, MD
amspiess@msn.com
412-337-0806
www.pittsburghhandandnerve.com

POWER OF ATTORNEY**Aligned Partners Trust Company**

Tom Crowley
TCrowley@alignedpartners.com
412-258-3590 x 112
www.AlignedPartners.com

Aligned Partners Trust Company

Lisa Dougan
LDougan@alignedpartners.com
412-258-3590 x 109
www.AlignedPartners.com

AmeriServ Trust and Financial Services Co.

Scott Porterfield
sporterfield@ameriserv.com
724-493-6847
www.AmeriServ.com

Baird

Elisa Cavalier
ecavalier@rwbaird.com
412-633-1688
www.rwbaird.com

On Your Behalf by Ursuline Support Services

Robert Marbella
rmarbella@ursulinesupport.org
412-880-3552
www.UrsulineOnYourBehalf.org

PRACTICE MANAGEMENT CONSULTING**SurePoint Technologies**

Lydia Flocchini
lflocchini@surepoint.com
www.surepoint.com

T2 Management Solutions

Tamara Philabaum
tsp@t2management.com
814-572-2294
www.t2management.com

PRACTICE MANAGEMENT SOFTWARE**LawPay**

Hannah Campbell
hcampbell@affinipay.com
512-716-8564
www.lawpay.com

Plummer Slade, Inc.

Alicia Slade
slade@plummerslade.com
412-261-5600
www.plummerslade.com

SimpleLaw

Dorothy Radke
Dorothy@SimpleLaw.com
312-560-5123
www.SimpleLaw.com

SurePoint Technologies

Lydia Flocchini
lflocchini@surepoint.com
www.surepoint.com

Thomson Reuters – Westlaw

Christine Martier
Christine.Martier@thomsonreuters.com
412-551-7251
www.ACBA.org/westlaw

PREMISES LIABILITY EXPERTS**Rimkus**

Jennie Weakland
jweakland@rimkus.com
330-618-6041
www.Rimkus.com

PRIVATE INVESTIGATORS**Finley Consulting & Investigations, Inc.**

Christopher J. Finley
cfinley@finleyinvestigations.com
412-364-8034
www.finleyinvestigations.com

Forletta Consulting and Investigative Services

Larry Forletta
Larry.Forletta@fcisllc.com
412-719-2112
www.fcisllc.com



Data security breaches are a constant threat

The Cybersecurity and Incident Response team at bit-x-bit can help

We get it. 

Data breaches can be caused by the actions (intentional or not) of employees or by outside threat actors. And whether initiated internally or externally, breaches can go undetected for days, weeks or even months. The cybersecurity and incident response team at bit-x-bit will determine exactly what happened and take action to mitigate the damage caused by the incident.

Exclusively endorsed since 2008 by the ACBA for eDiscovery and digital forensics services.

437 Grant Street, Suite 1250 | Pittsburgh, PA 15219 | 412-325-4033 | bit-x-bit.com

Harris Investigations, LLC

Michele Harris
harrisinvestigationsllc@yahoo.com
888-484-9827
www.HarrisInvestigations.net

PROCESS SERVING**Finley Consulting & Investigations, Inc.**

Christopher J. Finley
cfinley@finleyinvestigations.com
412-364-8034
www.finleyinvestigations.com

Harris Investigations, LLC

Michele Harris
harrisinvestigationsllc@yahoo.com
888-484-9827
www.HarrisInvestigations.net

PROPERTY LOSS**Rimkus**

Jennie Weakland
jweakland@rimkus.com
330-618-6041
www.Rimkus.com

PSYCHOLOGY/PSYCHIATRY EXPERTS**Bliss Psychological Services, LLC**

Beth Bliss, Psy.D.
bbliss@blisspsychological.org
412-780-8939
www.bethbliss.org

Burton Singerman, MD, LLC

Dr. Burton Singerman
info@burtsingerman.com
412-342-8630
www.burtsingerman.com

E.L.K. Independent Medical Expert Network

Kerry Smith
experts@elkimenetwork.com
412-545-3777
www.elkimenetwork.com

Makin Wellness

Sara Makin, MSED, LPC, NCC
info@makinwellness.com
833-274-HEAL
www.MakinWellness.com

MedicoLegal, Inc./Tucker IME

Barbara Carlson
info@medicolegalgroup.com
412-276-6241
www.medicolegalgroup.com

PSYCHOSEXUAL RISK ASSESSMENTS**Bliss Psychological Services, LLC**

Beth Bliss, Psy.D.
bbliss@blisspsychological.org
412-780-8939
www.bethbliss.org

PTSD EXPERTS**Burton Singerman, MD, LLC**

Dr. Burton Singerman
info@burtsingerman.com
412-342-8630
www.burtsingerman.com

E.L.K. Independent Medical Expert Network

Kerry Smith
experts@elkimenetwork.com
412-545-3777
www.elkimenetwork.com

Makin Wellness

Sara Makin, MSED, LPC, NCC
info@makinwellness.com
833-274-HEAL
www.MakinWellness.com

MedicoLegal, Inc./Tucker IME

Barbara Carlson
info@medicolegalgroup.com
412-276-6241
www.medicolegalgroup.com

PUBLIC RELATIONS**C4CS®**

Oliver S. Schmidt
schmidt@c4cs.com
412-708-0940
www.c4cs.com

REAL ESTATE – CORPORATE**JLL**

Dan Adamski
Dan.Adamski@am.jll.com
412-212-8090
www.JLL.com/Pittsburgh

Tenant Representation Associates, Inc.

Scott Fabean
sfabean@tenrep.com
412-341-4000
www.tenrep.com

REAL ESTATE AGENTS**JLL**

Dan Adamski
Dan.Adamski@am.jll.com
412-212-8090
www.JLL.com/Pittsburgh

Tenant Representation Associates, Inc.
Scott Fabean
sfabean@tenrep.com
412-341-4000
www.tenrep.com

REAL ESTATE BROKERS

JLL
Dan Adamski
Dan.Adamski@am.jll.com
412-212-8090
www.JLL.com/Pittsburgh

Tenant Representation Associates, Inc.
Scott Fabean
sfabean@tenrep.com
412-341-4000
www.tenrep.com

REAL ESTATE CLOSING SUPPORT

Chicago Title Insurance Company
Tom Baughman
Thomas.Baughman@ctt.com
412-537-0678
www.pittsburghncs.ctic.com

REAL ESTATE CONSULTING

Civil & Environmental Consultants, Inc.
Thomas Walsh, P.G.
twalsh@cecinc.com
412-429-2324
www.cecinc.com

JLL
Dan Adamski
Dan.Adamski@am.jll.com
412-212-8090
www.JLL.com/Pittsburgh

Owen Appraisal Service LLC
Joanna Owen
joanna@owenappraisal.com
412-999-6673
www.OwenAppraisal.com

Tenant Representation Associates, Inc.
Scott Fabean
sfabean@tenrep.com
412-341-4000
www.tenrep.com

REAL ESTATE OUTSOURCING

JLL
Dan Adamski
Dan.Adamski@am.jll.com
412-212-8090
www.JLL.com/Pittsburgh

Tenant Representation Associates, Inc.
Scott Fabean
sfabean@tenrep.com
412-341-4000
www.tenrep.com

RECORD MANAGEMENT AND RETRIEVAL

bit-x-bit, LLC
John Unice
info@bit-x-bit.com
412-325-4033
www.bit-x-bit.com/About-Us.pdf

Harris Investigations, LLC
Michele Harris
harrisinvestigationsllc@yahoo.com
888-484-9827
www.HarrisInvestigations.net

Network Deposition Services
Mark Vitelli
mvitelli@ndsreporting.com
412-281-7908
www.ndsreporting.com

RECRUITING

McClelland Legal Search
Dianne McClelland, Esq.
dianne@mcclellandlegalsearch.com
412-281-6609
www.mcclellandlegalsearch.com

RELOCATION CONSULTANTS

Tenant Representation Associates, Inc.
Scott Fabean
sfabean@tenrep.com
412-341-4000
www.tenrep.com

RETIREMENT PLAN ADVISORS

Baird
Elisa Cavalier
ecavalier@rwbaird.com
412-633-1688
www.rwbaird.com

Fort Pitt Capital Group LLC
Bevin Baker
bbaker@fortpittcapital.com
412-921-1822
www.fortpittcapital.com

Fragasso Financial Advisors
Marsha Posset
mposset@fragassoadvisors.com
412-227-3206
www.FragassoAdvisors.com

Shorebridge Wealth Management
Reed Natali
Natali@shorebridgewm.com
412-742-4862
www.shorebridgewm.com

For all your medical, psychological and psychiatric expert needs

MedicoLegal is a multi-specialty, medical consulting and expert witness agency. MedicoLegal is a medically directed, independent agency.

www.medicolegalgroup.com

MEDICOLEGAL

EXPERTS.
MEDICALLY MINDED.
LEGALLY FOCUSED.

About Us

We add value with highly experienced, in-house medical directors providing oversight to each consulting project.

We facilitate and manage the expert-client relationship with a full time staff and paperless, secure browser-based client and management toolkits.

Experts.
Medically minded.
Legally focused.

- Independent Medical Examination
- Impairment Rating Evaluations / Disability and Fitness for Duty Assessments
- Functional Capacity Evaluations
- Medical Record Reviews
- Imaging Reviews
- Ergonomic Assessments
- Expert Deposition and Live Testimony

Contact

412-276-6241

info@medicolegalgroup.com

WesBanco Trust and Investment Services

Harold Migias
migias@wesbanco.com
724-909-7055
www.wesbanco.com

RISK COMMUNICATION**C4CS®**

Oliver S. Schmidt
schmidt@c4cs.com
412-708-0940
www.c4cs.com

RISK MANAGEMENT**bit-x-bit, LLC**

John Unice
info@bit-x-bit.com
412-325-4033
www.bit-x-bit.com/About-Us.pdf

USI Affinity

Mark LeFever
mark.lefever@usi.com
610-537-1435
www.ACBA.org/Insurance

SHAREHOLDER/PARTNER DISPUTE CONSULTING**Gleason Experts**

Mark M. Gleason
mark@gleasonexperts.com
412-391-9010
www.gleasonexperts.com

Gleason Experts

Jerome (Jeb) B. Schmitt
jschmitt@gleasonexperts.com
412-391-5408
www.gleasonexperts.com

Grossman Yanak & Ford LLP

Mary Lou Harrison
harrison@gyf.com
412-338-9308 x 247
https://gyf.com

MDD Forensic Accountants

Jeffrey Belack
jbelack@mdd.com
412-220-7167
www.mdd.com

MDD Forensic Accountants

Marguerite Hart
mhart@mdd.com
412-220-7167
www.mdd.com

SHREDDING SERVICES**Shred America Iron City**

Jake Sonnekler
jake@shredamerica.com
412-676-4869
www.ShredAmerica.com

SOCIAL SERVICES**Achieva Family Trust**

Amy Anderson
aanderson@achieva.info
1-888-272-7229
www.achieva.info

Achieva Family Trust

Jacquelyn Connell
jconnell@achieva.info
1-888-272-7229
www.achieva.info

STRUCTURAL ENGINEERING EXPERTS**Rimkus**

Jennie Weakland
jweakland@rimkus.com
330-618-6041
www.Rimkus.com

TAX SERVICES**Grossman Yanak & Ford LLP**

Mary Lou Harrison
harrison@gyf.com
412-338-9308 x 247
https://gyf.com

RSM US

Nick Dehainaut
Nick.Dehainaut@rsmus.com
412-999-7302
www.rsmus.com

TECHNICAL SURVEILLANCE COUNTER MEASURES**Finley Consulting & Investigations, Inc.**

Christopher J. Finley
cfinley@finleyinvestigations.com
412-364-8034
www.finleyinvestigations.com

Forletta Consulting and Investigative Services

Larry Forletta
Larry.Forletta@fcisllc.com
412-719-2112
www.fcisllc.com

TELECOMMUNICATIONS**FSA Consulting**

Evan H. Stein
support@fsaconsulting.us
412-228-3100
https://fsaconsulting.us

FINLEY

CONSULTING & INVESTIGATIONS

Founded on the principles of hard work and excellent customer service, since 2002 we have been providing superior investigative services to our clients and yours.

CIVIL • CRIMINAL • CORPORATE • FAMILY
CONTACT US TODAY

What Do You Need To Know?

412.364.8034 PITTSBURGH

PHILADELPHIA 610.233.5412

FINLEYINVESTIGATIONS.COM

LICENSED IN PA, NJ, WV AND TN

TENANT REPRESENTATIVES

JLL

Dan Adamski
Dan.Adamski@am.jll.com
412-212-8090
www.JLL.com/Pittsburgh

Tenant Representation Associates, Inc.

Scott Fabean
sfabean@tenrep.com
412-341-4000
www.tenrep.com

TESTIMONY SERVICES

Makin Wellness

Sara Makin, MSEd, LPC, NCC
info@makinwellness.com
833-274-HEAL
www.MakinWellness.com

TITLE INSURANCE COMPANIES

Chicago Title Insurance Company

Tom Baughman
Thomas.Baughman@ctt.com
412-537-0678
www.pittsburghncs.ctic.com

TOXICOLOGY EXPERTS

Acri Muller Consulting

Allison A. Muller, PharmD, FAACCT
Allison@acrimullerconsulting.com
215-593-5805
www.acrimullerconsulting.com

E.L.K. Independent Medical Expert Network

Kerry Smith
experts@elkimenetwork.com
412-545-3777
www.elkimenetwork.com

MedicoLegal, Inc./Tucker IME

Barbara Carlson
info@medicolegalgroup.com
412-276-6241
www.medicolegalgroup.com

Rimkus

Jennie Weakland
jweakland@rimkus.com
330-618-6041
www.Rimkus.com

Tetra Tech, Inc.

Jeffrey A. Hassen, P.G.
jeff.hassen@tetrattech.com
412-921-7073
www.tetrattech.com

TRANSPORTATION EXPERTS

Civil & Environmental Consultants, Inc.

Thomas Walsh, P.G.
twalsh@cecinc.com
412-429-2324
www.cecinc.com

Rimkus

Jennie Weakland
jweakland@rimkus.com
330-618-6041
www.Rimkus.com

TRIAL PRESENTATION

AKF Technologies

depo@akf.com
412-261-2323
www.AKF.com

Litigation Advantage

Karen A. Begley
kbegley@litadvantage.com
412-486-3325
www.litadvantage.com

Network Deposition Services

Mark Vitelli
mvitelli@ndsreporting.com
412-281-7908
www.ndsreporting.com

Planet Depos

Charlie Georgi
charlie.georgi@planetdepos.com
724-366-0428
www.planetdepos.com

Planet Depos

Cindy Miklos
cindy.miklos@planetdepos.com
412-334-5465
www.planetdepos.com

TRUST COMPANIES

Achieva Family Trust

LeeAnn Fulena
lfulena@achieva.info
1-888-272-7229
www.achieva.info

Achieva Family Trust

Amy Dolan Strano
adstrano@achieva.info
1-888-272-7229
www.achieva.info

Aligned Partners Trust Company

Tom Crowley
TCrowley@alignedpartners.com
412-258-3590 x 112
www.AlignedPartners.com

Aligned Partners Trust Company

Lisa Dougan
LDougan@alignedpartners.com
412-258-3590 x 109
www.AlignedPartners.com

AmeriServ Trust and Financial Services Co.

Scott Porterfield
sporterfield@ameriserv.com
724-493-6847
www.AmeriServ.com

Baird

Elisa Cavalier
ecavalier@rwbaird.com
412-633-1688
www.rwbaird.com

Key Private Bank

Kim Cantalamessa
Kim_Cantalamessa@keybank.com
412-807-2755
www.KeyBank.com

River Communities Fiduciary Services, Inc.

Eric O'Connor
eoconnor@rcfstrusts.org
724-385-8492
www.rcfstrusts.org

Smithfield Trust Company

Samuel K. Adams
sadams@smithfieldtrustco.com
412-261-0779
www.SmithfieldTrustCo.com

Smithfield Trust Company

Elizabeth J. Poggi
epoggi@smithfieldtrustco.com
412-261-0779
www.SmithfieldTrustCo.com

WesBanco Trust and Investment Services

Harold Migias
migias@wesbanco.com
724-909-7055
www.wesbanco.com

VIDEO SERVICES

ACBA Video

Marty Barron
mbarron@acba.org
412-261-5588
www.ACBA.org/video

AKF Technologies

depo@akf.com
412-261-2323
www.AKF.com

Litigation Advantage

Karen A. Begley
kbegley@litadvantage.com
412-486-3325
www.litadvantage.com

Network Deposition Services

Mark Vitelli
mvitelli@ndsreporting.com
412-281-7908
www.ndsreporting.com

Planet Depos

Charlie Georgi
charlie.georgi@planetdepos.com
724-366-0428
www.planetdepos.com

Planet Depos

Cindy Miklos
cindy.miklos@planetdepos.com
412-334-5465
www.planetdepos.com

WEALTH MANAGEMENT

AmeriServ Trust and Financial Services Co.

Scott Porterfield
sporterfield@ameriserv.com
724-493-6847
www.AmeriServ.com

Baird

Elisa Cavalier
ecavalier@rwbaird.com
412-633-1688
www.rwbaird.com

Compass Rose Financial

Timothy Cummings
timothycummings@financialguide.com
412-562-4427
www.compassrose.financial

Fort Pitt Capital Group LLC

Bevin Baker
bbaker@fortpittcapital.com
412-921-1822
www.fortpittcapital.com

Fragasso Financial Advisors

Marsha Posset
mposset@fragassoadvisors.com
412-227-3206
www.FragassoAdvisors.com

Key Private Bank

Kim Cantalamessa
Kim_Cantalamessa@keybank.com
412-807-2755
www.KeyBank.com

Shorebridge Wealth Management

Reed Natali
Natali@shorebridgewm.com
412-742-4862
www.shorebridgewm.com

WesBanco Trust and Investment Services

Harold Migias
migias@wesbanco.com
724-909-7055
www.wesbanco.com

WEBSITE DESIGN

ACBA Website Design Program

James Piaggio
jpiaggio@acba.org
412-402-6653
jpiaggio@acba.org

Thomson Reuters – FindLaw

Mark Melago
mark.melago@thomsonreuters.com
412-601-0734
www.LawyerMarketing.com

Thomson Reuters – FindLaw

Justin Niedzwecki
justin.niedzwecki@thomsonreuters.com
412-980-0915
www.LawyerMarketing.com

WORKERS' COMP PHARMACIES

EZ Scripts Pharmacy

Stacy Krauth
stacyk@ezrxmeds.com
412-930-4572
www.EZRxMeds.com

WRITING, EDITING

C4CS®

Oliver S. Schmidt
schmidt@c4cs.com
412-708-0940
www.c4cs.com

CounselStack

Von Wooding
ai@counselstack.com
724-769-0772
www.CounselStack.com